

# ESS MINIMALIST HOUSEHOLD ENERGY STORAGE SOLUTIONS

# ABOUT SHOTO

## PROFILE

- ✓ China Environmental Friendly Enterprise
- ✓ Jiangsu Province Quality Award
- ✓ National Key Hi-Tech Enterprise
- ✓ China's Top 100 Electronic Information Enterprises
- ✓ State-level Credit Unit
- ✓ Top 100 Light Industry Enterprises in China
- ✓ Global 500 New Energy Enterprises
- ✓ Top 10 Energy Storage Battery Providers in PV, Storage and Charging Area
- ✓ China's Communications Industry's Most Valuable Brand
- ✓ Green Manufacturing Demonstration Enterprise
- ✓ China The Best Energy Storage Power Station Operator Award





1990

Found

5

R&D Bases

3000+

Employees

5

Delivery Centers

50+

Offices

600+

Patents

150+

Countries & regions

This is a world of Internet of Everything. This is also a world of Artificial Intelligence. Shoto, constantly focused on research and development for a smart energy world with targeted innovative solutions, comprehensive product and global service system, aimed at providing high-efficiency smart energy solutions and promoting the transformation of smart energy and demonstrating its capabilities at a global scale.

We actively explore and discover a new world of energy. For telecom industry, Shoto has a full range of energy storage solutions, and provides reliable green energy security. For power industry, we are becoming a core hub of creating future smart grid networks. For transportation industry, Shoto is supplying new, clean and high-efficiency energy to offer assistance to social development. In recycling industry, Shoto is the first to build recycling industry chains for lead acid battery in China to protect the environment.

Never stop, keep climbing, Shoto bring together the power of talents. Collaborate with famous colleges, universities and scientific research institutes, like Harvard, MIT, The Chinese academy of sciences, ALABC, on core technologies for the development of innovative smart energy solutions, promoting the transformation of scientific and techno-

-logical achievements, and developing smart energy solutions with core competitiveness. Over the years, Shoto has completed numerous national scientific research projects by participating and leading committees in developing various industry standards. Shoto is applying the power of innovation to drive development and reform of China's smart energy industry and are contributing towards sustainable living around the world.

Creating a successful future with innovation! Shoto, as a model company for the new national smart manufacturing system, guarantees the outstanding quality of each product and the commitment to "safety, continuous improvement, customer focus and passion" for the world around us.

Shoto, storage of love and green energy. As a green, environmentally friendly company with a green corporate power to meet environmental social responsibility. Stand at a new historical starting point and focus on the development of the smart energy industry, with continuous innovation in science and technology. Create customer value as a core focus. Build a beautiful world with Internet of Everything !



2

Cell  
( Capacity 6GWh )



500+

Patents



2

R&D



1500000+

Running



500+

Serve Customers  
(CNBM, Ericsson, ZTE, Huawei)

# PRODUCTS

01

Battery  
Module



SDC10-Box5

02

Battery  
Module

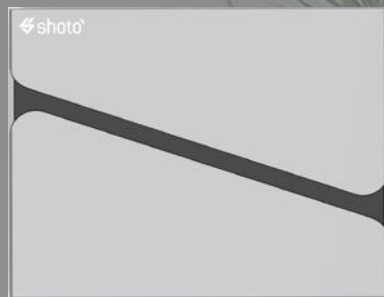


HP-S





HP10-Box5



HP10-Box5 Pro



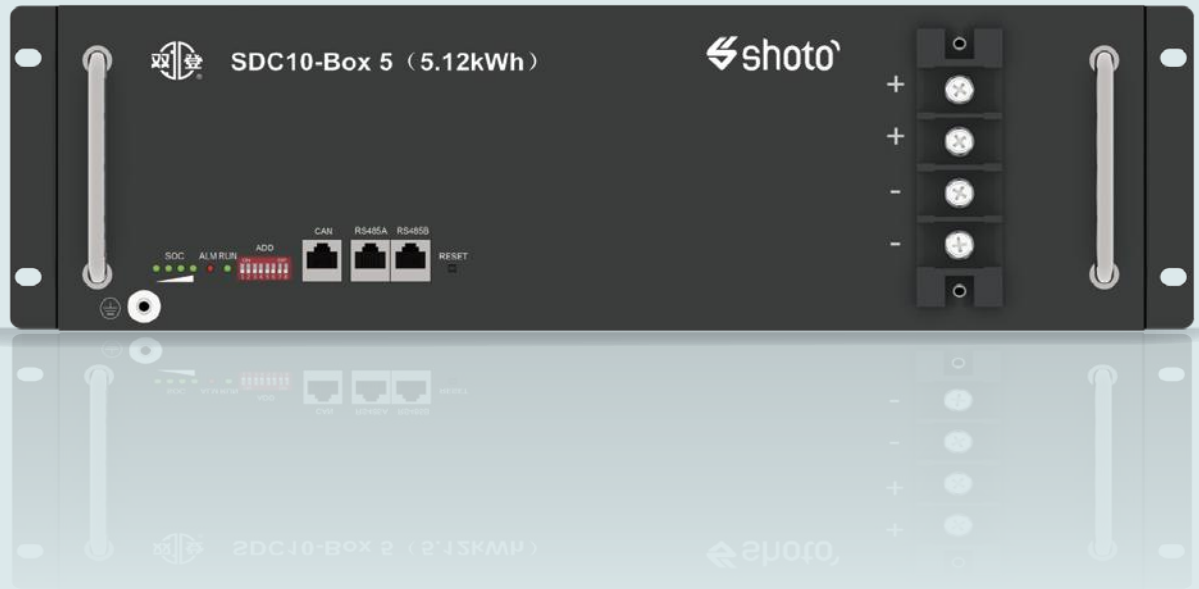
LV

# Simple Modular Battery Series

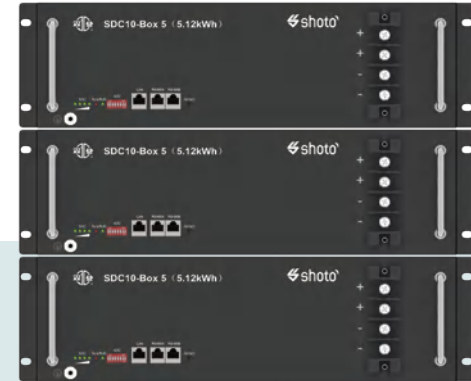
5.12 / 10.24 / 15.36 / 20.48 kWh

51.2V

SDC10-Box5 / SDC10-Box10 / SDC10-Box15 / SDC10-Box20 /



# Shoto SDC10-Box5



**01**

High LFP Cyclic Cell

**02**

Wide Compatibility  
( Installed 20+ Communication Protocols )

**03**

Multiple installation methods  
( 19" / 23" inch / Wall-mounted / stacking )

**04**

Easy Expansion  
( MAX 20 Pcs Parallel )





## Technical Parameters

Model	SDC10-Box5
Nominal Capacity	5.12 kWh
Usable Capacity	4.1 kWh (Suggest) 5.12 kWh (MAX)
Charge Voltage	54.0 - 56.4 V
Discharge Voltage	45.0 - 48.0 V
Nominal Voltage	51.2 V
Charge/Discharge Current	Recommend 50 A (0.5C) Max 100 A (1C)
Communication Port	CAN & RS485
Dimensions	(443±2) x (135±2) x (440±2) mm
Operating Temperature	Charge: 0 ~ +45 °C Discharge: -20 ~ +50 °C Storage: -20°C ~ +35 °C
Weight	40±2 Kg
Protection Level	IP20
Expansion	Up to 20 units in parallel
Pros	Pre-installed 20 inverter communication protocols, Supports embedded, wall-mounted, stacked mounting
Compatible Inverters	Deye / Goodwe / Luxpower / Victron / SMA / Growatt / Sofar / SRNE / TBB / Megarevo / Soruide / Sungrow / Solis / Voltronic / Epever etc.
Certification	UL1973 / IEC62619 / CE / UN38.3 / CEI 0-21

LV

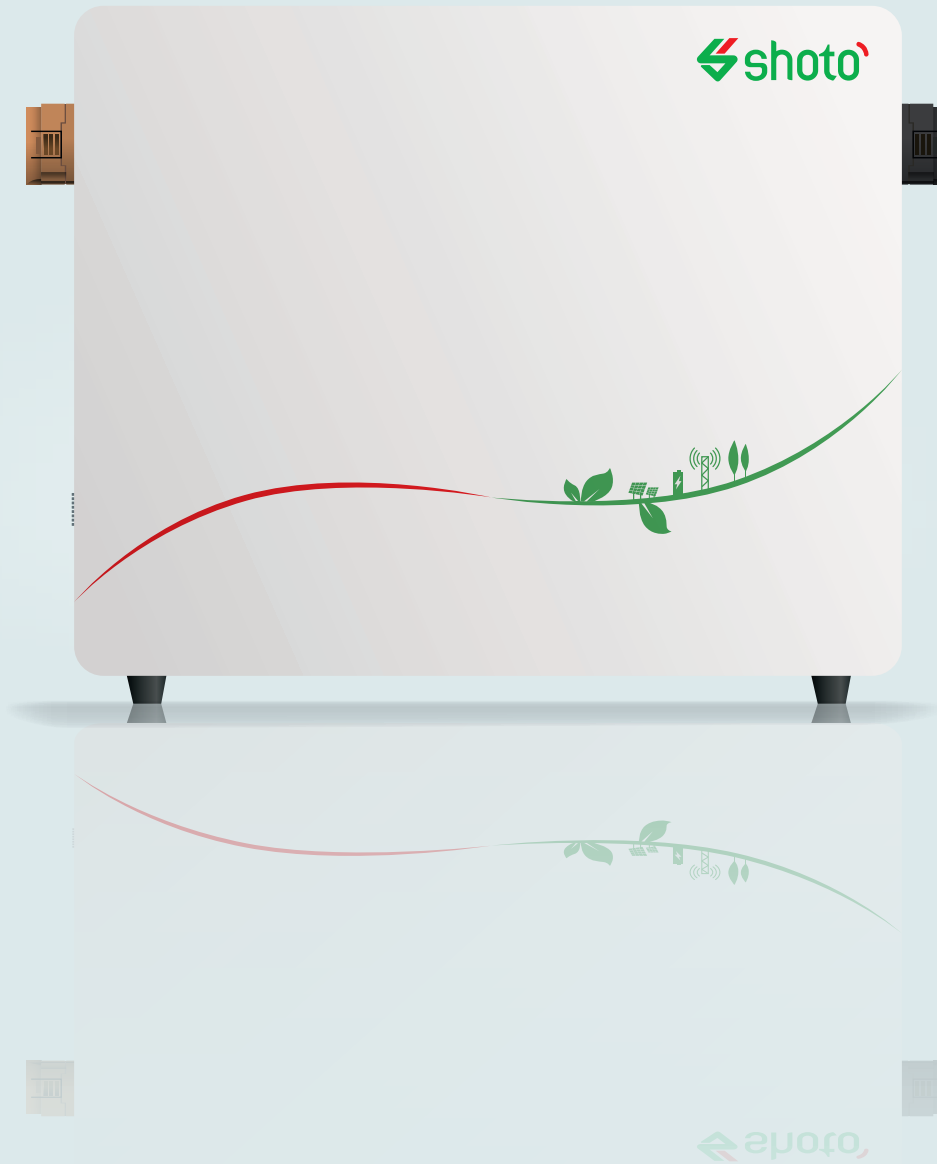
# Wall-mount Modular Battery Series

5.12 / 10.24 / 15.36 / 20.48k Wh

51.2V

HP10-Box5 / HP10-Box10 / HP10-Box15 / HP10-Box20 /





shoto



# Shoto HP10-Box5



**01**

High LFP Cyclic Cell

**02**

Easy to Install ( Plug )

**03**

Small Footprint ( 0.062m<sup>2</sup> )

**04**

Multiple Installation Methods  
( Wall / Vertical Installation )

## Technical Parameters

Model	HP10-Box5
Nominal Capacity	5.12 kWh
Usable Capacity	4.6 kWh ( Suggest ) 5.12 kWh (MAX)
Charge Voltage	54.0V - 56.4 V
Discharge Voltage	45.0V - 48.0 V
Nominal Voltage	51.2 V
Charge/Discharge Current	Recommend 50 A (0.5C) Max 100 A (1C)
Communication Port	CAN & RS485
Dimensions	(510±2) x (140±2) x (440±2) mm
Operating Temperature	Charge: 0 ~ +45 °C Discharge: -20 ~ +50 °C Storage: -20 ~ +35 °C
Weight	43 ±2 Kg
Protection Level	IP21
Expansion	Up to 16 units in parallel
Pros	Pre-installed 16 inverter communication protocols, Can be wall-mounted and vertical mounted
Compatible Inverters	Deye / Goodwe / Luxpower / Victron / SMA / Growatt / Sofar / Voltronic / Epever etc.
Certification	IEC62619 / CE / UN38.3

LV

# Stacked Battery Series

5.12 / 10.24 / 15.36 / 20.48k Wh

51.2V

HP10-Box5 Pro / HP10-Box10 Pro / HP10-Box15 Pro / HP10-Box20 Pro /





# Shoto HP10-Box5 Pro

01

Pile Up Design

02

Self ( Automatic Configuration )

03

Wide Compatibility ( Match 20+ Types of Inverters )

04

Three-level Security Protection  
( BMS + Contactor + Fire Extinguisher )

05

Supports Wireless Readings



## Technical Parameters

	HP10-Box5 Pro	HP10-Box10 Pro	HP10-Box15 Pro	HP10-Box20 Pro
Battery module	HP10-Box5 Pro (5.12 kWh)			
	1 module	2 module	3 module	4 module
Usable	5.12 kWh	10.24 kWh	15.36 kWh	20.48 kWh
Max Output Power	5.12 kW	8.2 kW	12.3 kW	16.4 kW
Peak Output Power	5.4 kW, 10 s	10.5 kW, 10 s	15.5 kW, 10 s	20.0 kW, 10 s
Round-Trip Efficiency	≥ 94%			
Nominal Voltage	51.2 V			
Operating Voltage Range	45.0 ~ 56.4 V			
Communication	CAN / RS485			
Dimensions	(580±2) x (150±2) x (440±2) mm	(580±2) x (396±2) x (440±2) mm	(580±2) x (546±2) x (440±2) mm	(580±2) x (696±2) x (440±2) mm
Weight	48±2 Kg	103±2 Kg	149±2 Kg	195±2 Kg
Protection Level	IP21			
Operating Temperature	Charge: 0 to +50 °C Discharge: -20 to +50 °C			
Scalability	Max 3 Systems in parallel / 60 kWh			
Compatible Inverters	Deye / Goodwe / Luxpower / Victron / SMA / Growatt / Sofar / SRNE / TBB / Megarevo / Soruide / Sungrow / Solis / Voltronic / Epever etc.			
Certification	UL1973 / IEC62619 / CE-EMC / UN38.3			

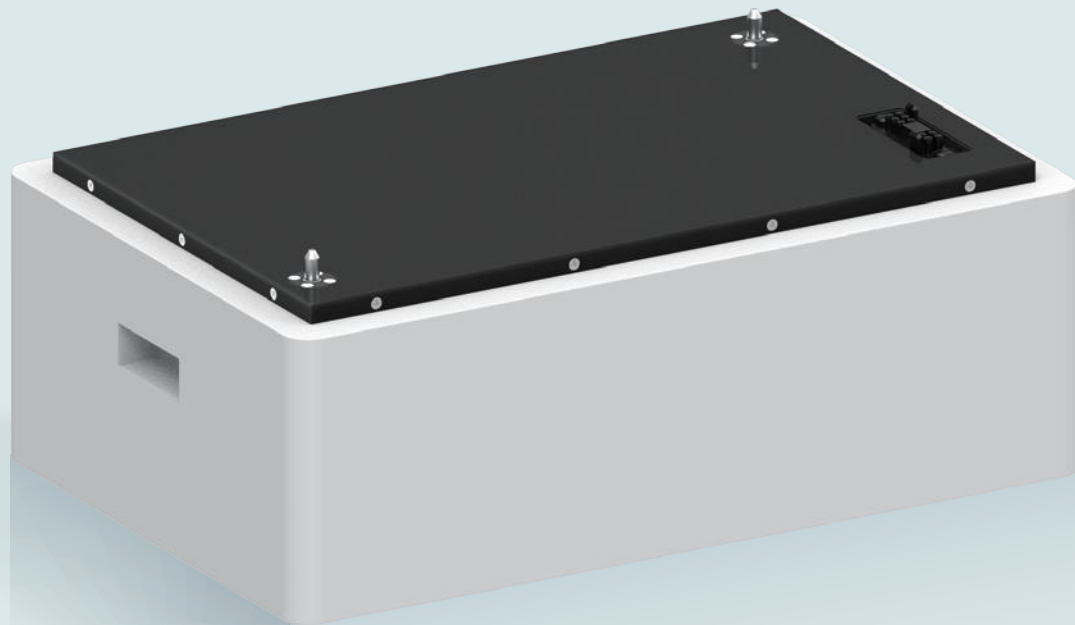


HV

# High Voltage Battery Series

10.24 / 15.36 / 20.48 / 25.6 kWh

HP-S10 / HP-S15 / HP-S20 / HP-S25 /



## Shoto HP-S10~25



**01**

IP21

**02**

High Voltage ( High System Efficiency )

**03**

Pile Up Design ( Wireless Connection Easy to install )

**04**

Wide Compatibility  
( Matching with Leading Inverter Brands )

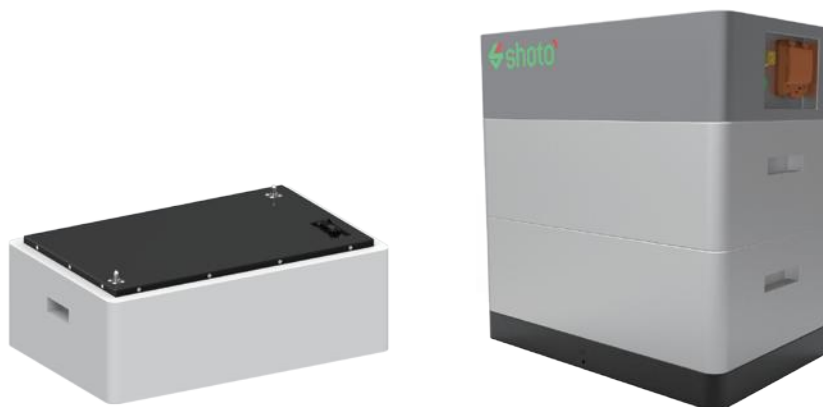
**05**

Self ( Automation Configuration )



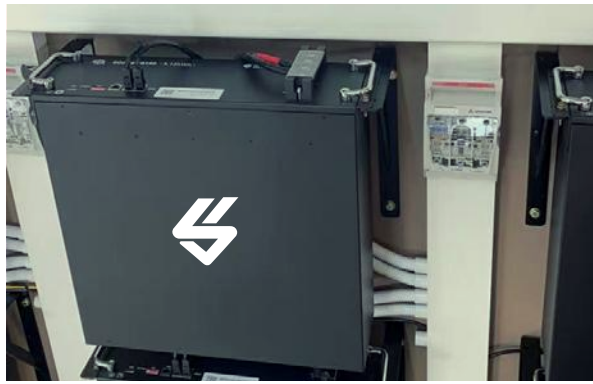
## Technical Parameters

	HP-S10	HP-S15	HP-S20	HP-S25
Battery module	HP - S05 ( 5.12 kWh )			
	2 module	3 module	4 module	5 module
Usable Energy	10.24 kWh	15.36 kWh	20.48 kWh	25.6 kWh
Nominal Voltage	204.8 V	307.2 V	409.6 V	512.0 V
Operating Voltage Range	160 ~ 233.6 V	240 ~ 350.4 V	320 ~ 467.2 V	400 ~ 584 V
Communication	CAN			
Dimensions (W/D/H)	600 x 390 x 625 mm	600 x 390 x 825 mm	600 x 390 x 1025 mm	600 x 390 x 1225 mm
Weight	126 ± 2 kg	179 ± 3 kg	232 ± 4 kg	285 ± 5 kg
Protection Level	IP21			
Operating Temperature	Charge: 0 to + 50 °C Discharge: -20 to +55 °C			
Certification	UL1973 / IEC62619 / CE-EMC / UN38.3			
Warranty	10 years			





# APPLICATION







Energy

MINIMALIST HOUSEHOLD ENERGY STORAGE SOLUTIONS





*Storage Love & Green Energy*

**S&T Park:**

Jiangyan Economic Development Zone  
Taizhou, Jiangsu, China

---

Email: [storagemarketing@chinashoto.com](mailto:storagemarketing@chinashoto.com)

WebSite: [www.chinashoto.com](http://www.chinashoto.com)

Zip code: 225500

Telephone: 0086 10 - 5653 3600 / +86 523 - 8852 1888

Fax: 0086 10 - 5653 3659 / +86 523 - 8852 1244